

State of Wyoming Corner Record

(In compliance with the CORNER PERPETUATION AND FILING ACT, Wyoming Statutes, 1977, Section 36-11-101, et. seq., and the Rules and Regulations of the Board of Registration for Professional Engineers and Professional Land Surveyors.)

Reverse side of this form may be used if more space is needed.

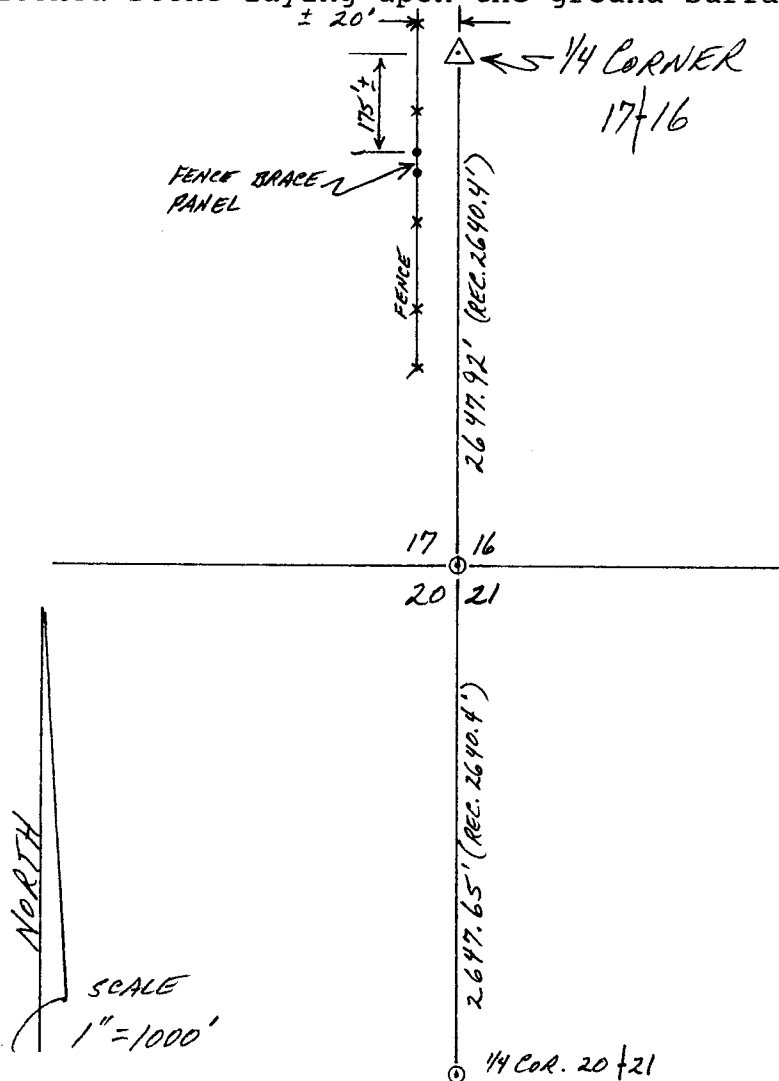
Record of original survey and citation of source of historical information (if corner is lost or obliterated). Description of corner monumentation evidence found and/or monument and accessories established to perpetuate the location of this corner. Sketch of relative location of monument, accessories, and reference points with course and distance to adjacent corner(s) (if determined in this survey). Method and rationale for reestablishment of lost or obliterated corner.

1/4 CORNER common to sections 16 and 17, T.15N., R.66W.

G.L.O. - Granite Stone 15" x 8" x 6"

LARAMIE COUNTY ENGINEER - Book No. 51, Pages 82 - 87, dated Dec. 6, 1968. - "Stone flat".

FOUND - Etched stone laying upon the ground surface.



LARAMIE COUNTY CLERK
CHEYENNE, WY.
JUL 19 95 AM 10 48
165547

Horizontal distances were long in the north-south direction in comparison to the Laramie County Engineer's measurements of 1968. The north-south of lay of the land is hilly with course up and down over hills and draws, which may account for possible error in measurement during the Laramie County Engineer's survey. The overall measurements support identification of the disturbed stone as the monument used by the Laramie County Engineer in his survey of 1968.

Date of Field Work: 11/17/90

Office Reference: _____

CROSS INDEX DIAGRAM

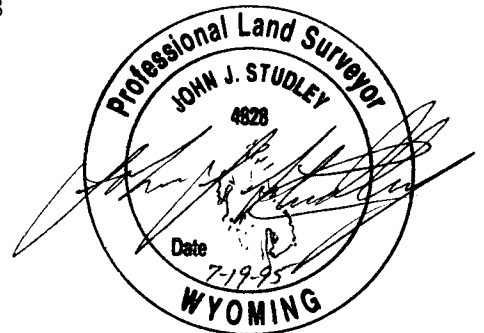
	1	2	3	4	5	6	7	8	9	10	11	12	13	14	15	16	17	18	19	20	21	22	23	24	25
A																									
B																									
C		6			5			4			3			2			1								
D																									
E																									
F																									
G		7			8			9			10			11			12								
H																									
J																									
K																									
L		18			17			16			15			14			13								
M																									
N																									
O																									
P		19			20			21			22			23			24								
Q																									
R																									
S																									
T		30			29			28			27			26			25								
U																									
V																									
W																									
X		31			32			33			34			35			36								
Y																									
Z																									

Firm/Agency, Address

PREPARED BY:
John J. Studley
3509 Frontier St.
Cheyenne, WY 82001
1-307-634-3358

This corner record was prepared by me or under my direction and supervision.

SEAL & SIGNATURE



BOOK 1402

1129

Corner Name: One-Quarter Section: 17/16 T. 15N. R. 66W. 6th P.M. Cross-Index No.: L-9

SBRPEPLS/PLSNW March 1994 (CLCR SJA)